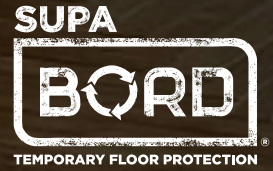


SUPABORD PRODUCT RANGE



Bord Industries have developed the SupaBord product range, a comprehensive temporary floor and surface protection system for the construction industry.

Designed to prevent the risk of rework and on-site damage to surfaces, the SupaBord product range assists in reducing the carbon footprint and ecological impact on construction and renovation projects.



SUPABORD HEAVY DUTY

SupaBord Heavy Duty is our premium temporary floor protection for commercial, residential construction and renovation projects.

Using the latest technology in floor protection, SupaBord Heavy Duty provides a perfect balance of vapour permeability, durability and strength. With the ability to withstand the demands of construction traffic, SupaBord Heavy Duty is a safe, non-slip working surface that repels liquid spillage, reducing the risk of accidents in the workplace.

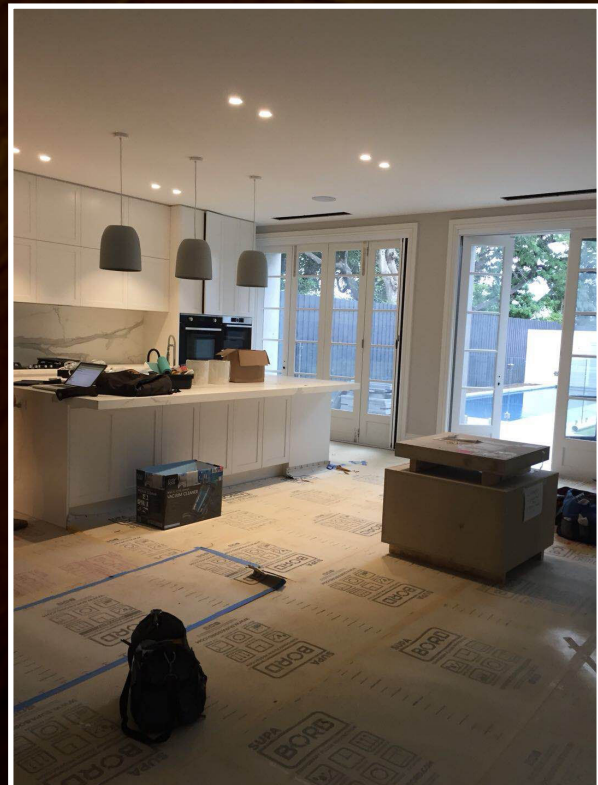
Roll size Approximately 800mm wide x 37.5m long x 1mm thick, covers 30 sqm



SUPABORD JOINT TAPE

SupaBord Joint Tape is specifically designed to secure SupaBord Temporary Floor Protection seams together for up to 90 days.

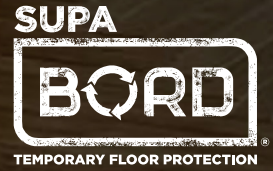
Roll size: 60mm wide x 40m long x 0.18mm thick



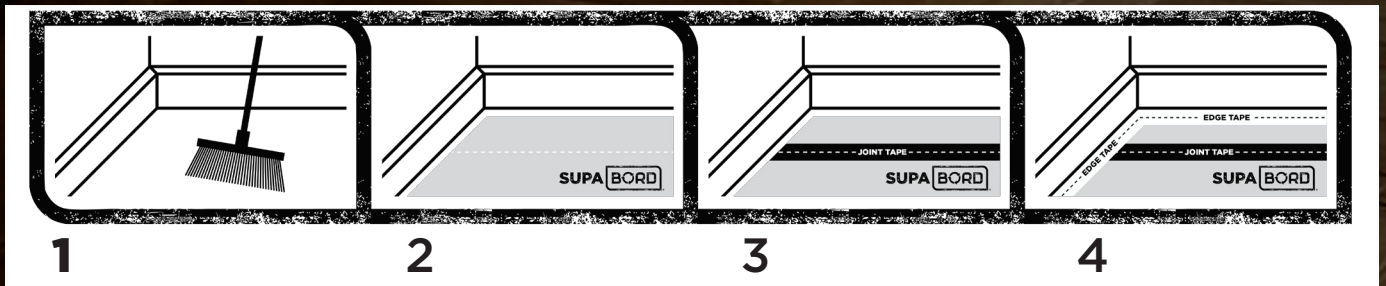
SupaBord
Bord Industries Australasia Pty Ltd
32-34 Teton Court, Highett VIC 3190
T: 1800 735 562 E: sales@supabord.com
www.supabord.com



SUPABORD INSTALLATION INSTRUCTIONS



STEPS



STEP 1

Ensure the subfloor (base floor) is CLEAN and DRY. Use a clean and dry rag to wipe outside before tape. Remove plastic sleeve from the SupaBord roll. Roll out SupaBord over the flooring area or surface, logo side facing up.

STEP 2

Cut SupaBord to length with a utility knife, ensuring the seams are neat and fit well together.

STEP 3

Tape the SupaBord butt joints, long joints and perimeter with SupaBord Joint Tape. Do not apply SupaBord Joint Tape to floor surfaces as it may affect some finishes.

STEP 4

Apply SupaBord Edge Tape

